

Running Board Instructions

3061 (1" Drop)

99-C Ford F250/F350 Super Duty
Standard / Super Cab

(No Drilling Required)

INSTALLATION PACKAGE

Running Boards	2
Installation Instructions	1
Bracket	8
Bolt Packs	2

Necessary Tools

Measuring Tape
Ratchet wrench with 1/2" socket
Combination wrench

Bracket Bolt Pack

5/16" x 3/4" Hex Bolts	16
5/16" Flange Nut	8
5/16" U-Nut	8
5/16 Flat Washers	16

Running Board Bolt Pack

5/16" x 3/4" Hex Bolts	16
5/16" Flange Nut	16

STEP One: Determine proper bracket placement Fig A & B

- 1) On the inside of the rocker panel are 4 sets of holes.
- 2) Place a U-nut over one of the top holes either the right or left side.

STEP Two: Loosely bolt brackets to vehicles Fig C

- 1) Bolt the brackets on by hand tightening the lower bolt, washer and nut first.
- 2) Slide bolts down underside of board to line up with brackets. You will only need one bolt to hold board to bracket. Use two if slots in bracket line up.
- 3) Tilt board back and slide up under body letting the rear bolts fall into slots first then the front bolts.
- 4) Hand tighten the board to the brackets using 5/16" flange nuts
- 5) Slide board in or out to desired location
- 6) Tighten down lock nuts under running board

STEP Three: Tighten brackets

- 1) Push board tight against vehicle and tighten bolts
- 2) Check that all brackets are tight before stepping on boards.

Fig A

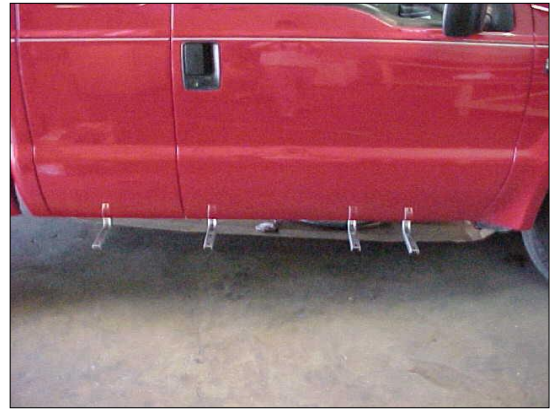


Fig B

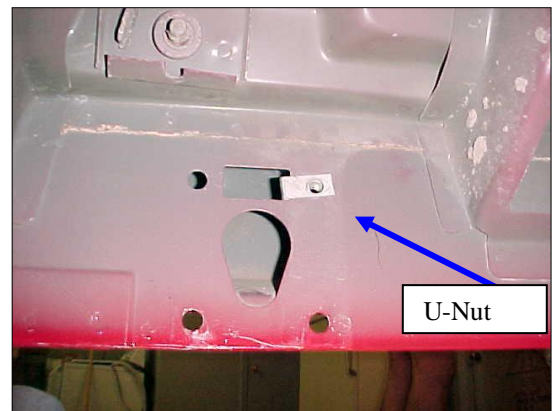


Fig C

